

FILM AND DIGITAL TIMES

Art, Technique and Technology in Motion Picture Production Worldwide



Sony RIALTO 65 Development Announcement

Sony RIALTO 65 Development Announcement



Above: Yokohama waterfront. Below: Sony City Minato Mirai. Photos by Jon Fauer .

It was an offer I couldn't refuse. "Come visit us in Yokohama. We have something big to show you," said Nobutatsu (Nobu) Takahashi, Senior General Manager of Sony's New Content Creation Business Unit Cinema Line Division.

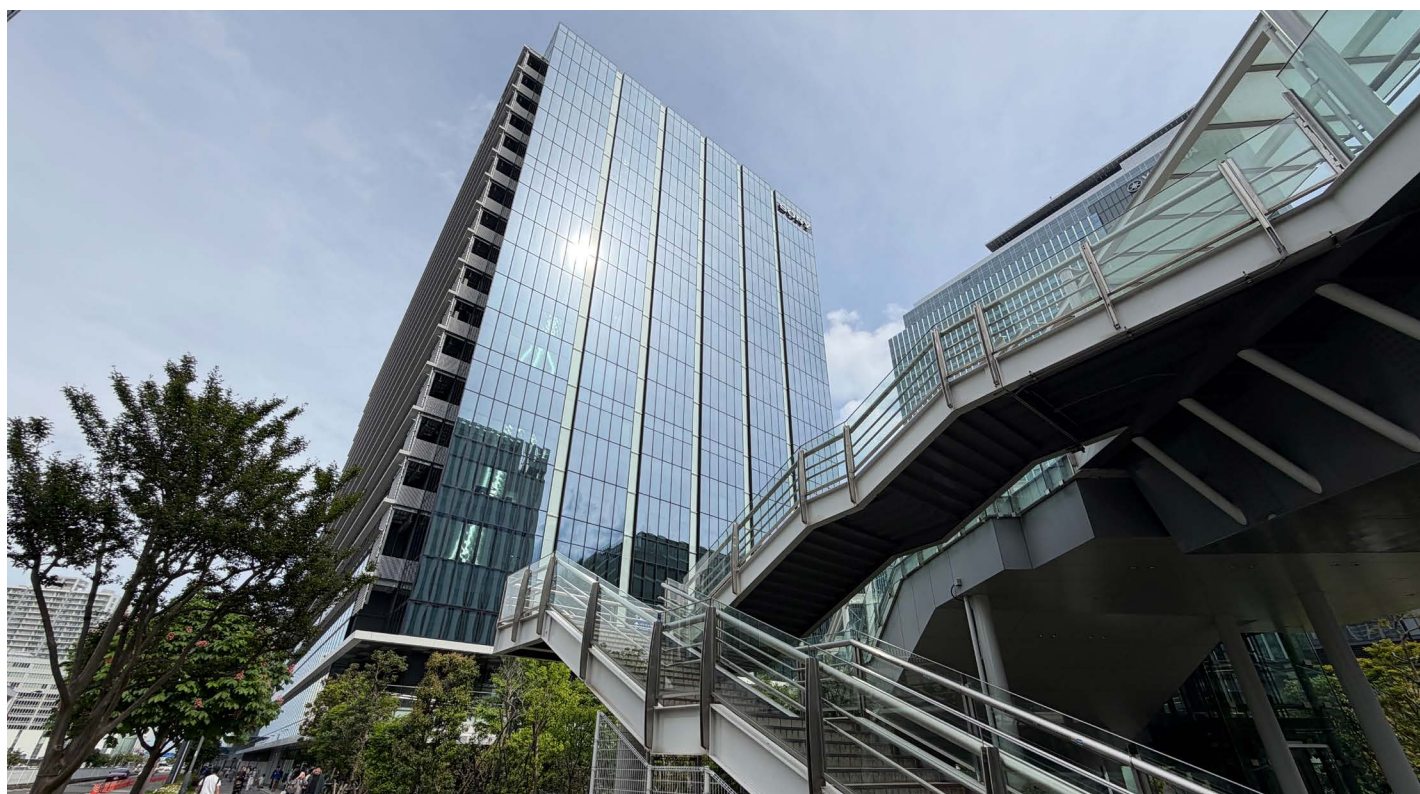
I arrived at Sony City Minato Mirai, headquarters of Sony's Imaging Division. It was a pleasant 8-minute walk from the Yokohama waterfront.

This was becoming a habit. Only a year ago, I got an in-depth advance sneak peak at the nascent VENICE Extension System

Mini (aka RIALTO Mini). If this was something big, could it possibly be a bigger brother of RIALTO Mini?

Yes, this was a preview of Sony's RIALTO 65 development announcement, to be revealed on June 3. There had been cries and whispers, hopes and rumors for quite some time that Sony would not resist the temptation of a 65mm format camera. Sony had been stoic in response with winks and "it's under consideration." And yet, wasn't Sony known for 5-year roadmaps?

Mr. Nobu Takahashi is known for showing up at almost every



Sony RIALTO 65 Development Announcement



Koji Morioka (Lead Mechanical Engineer) and Tetsuji Yamaguchi (Project Leader) revealing a pre-production Sony RIALTO 65 camera system.

major tradeshow and event, standing all day to greet DPs and users. And so, with great ceremony and fanfare, the Sony CineAlta team whisked the concealing cover off the latest camera system. You could almost hear the Odaiko big traditional drums in the background. “Welcome to an early version of the Sony RIALTO 65 that is still under development. Please wait for more details as we work over the course of this year.”

The camera system is much more than expected and very exciting. You can recognize what’s going on in the photo above. Even the name RIALTO 65 describes what it is. There’s an

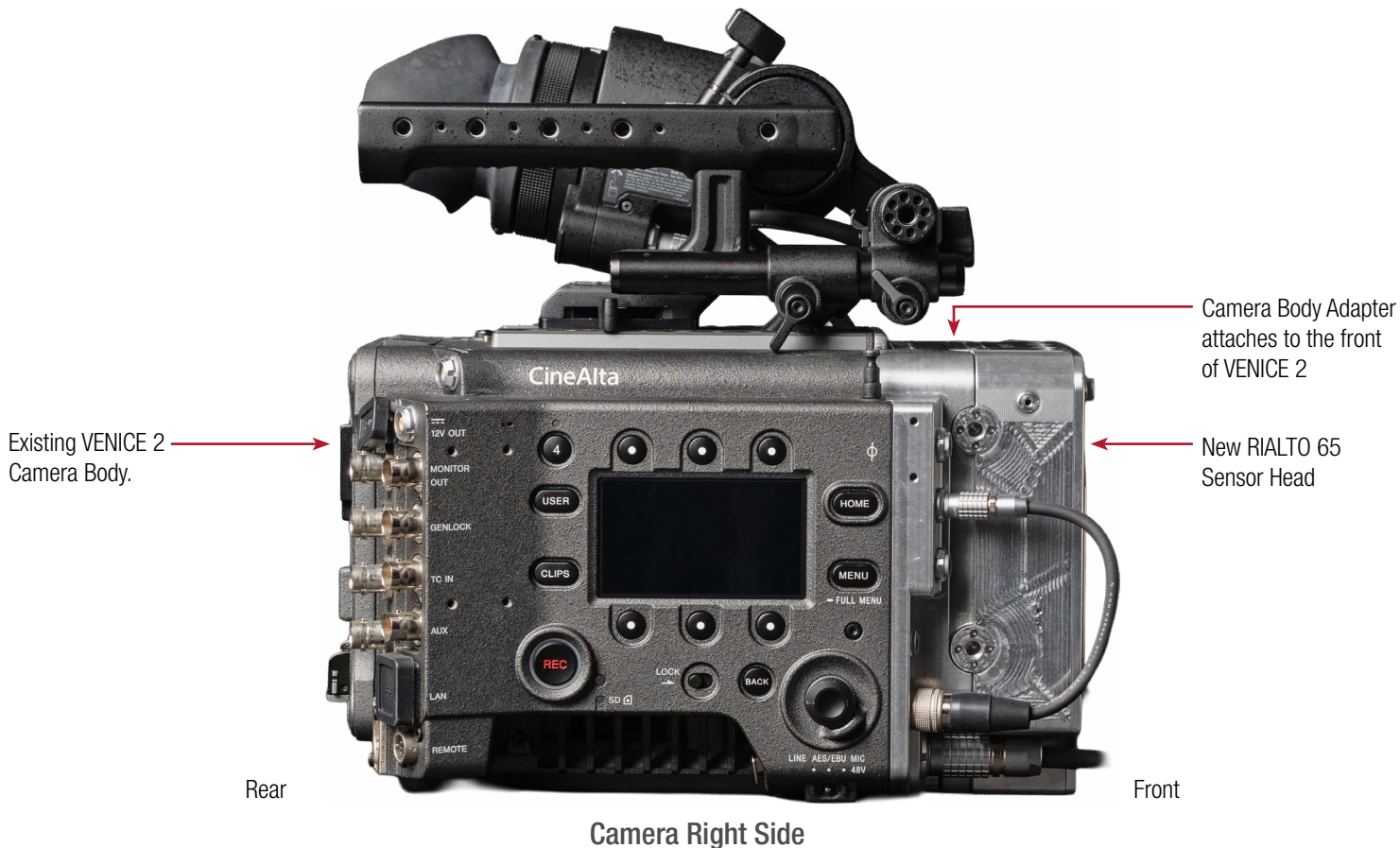
existing VENICE 2 body in back. Rental houses and owners will rejoice. Their investments are not rendered obsolete. Remove the VENICE 2 Full Frame sensor assembly and replace it with the new 65mm format sensor head for 1.4x larger format production. Keep your Full Frame front-end and swap back and forth.

Why is it called RIALTO 65? Because you can tether the 65mm sensor block to the camera in ways already familiar to users of the original RIALTO and RIALTO Mini.

The entire concept is extremely well conceived and carried out.



Sony RIALTO 65 Development Announcement



Sony RIALTO 65 Development Announcement

Front Views



RIALTO 65 comes without a lens mount. Native flange focal distance from the flat front to the sensor is 20 mm.



Here's the new Leitz Cine LPL Mount for RIALTO 65. Note that the RIALTO 65 LPL Mount is different from the PL Mount for VENICE 2 because the flange focal distance is different.



RIALTO 65 (65mm Format)



VENICE 2 (Full Frame) with E-mount



RIALTO Mini with E-mount (Full Frame)

Product photography by Keita Yasui, Sony Public Relations

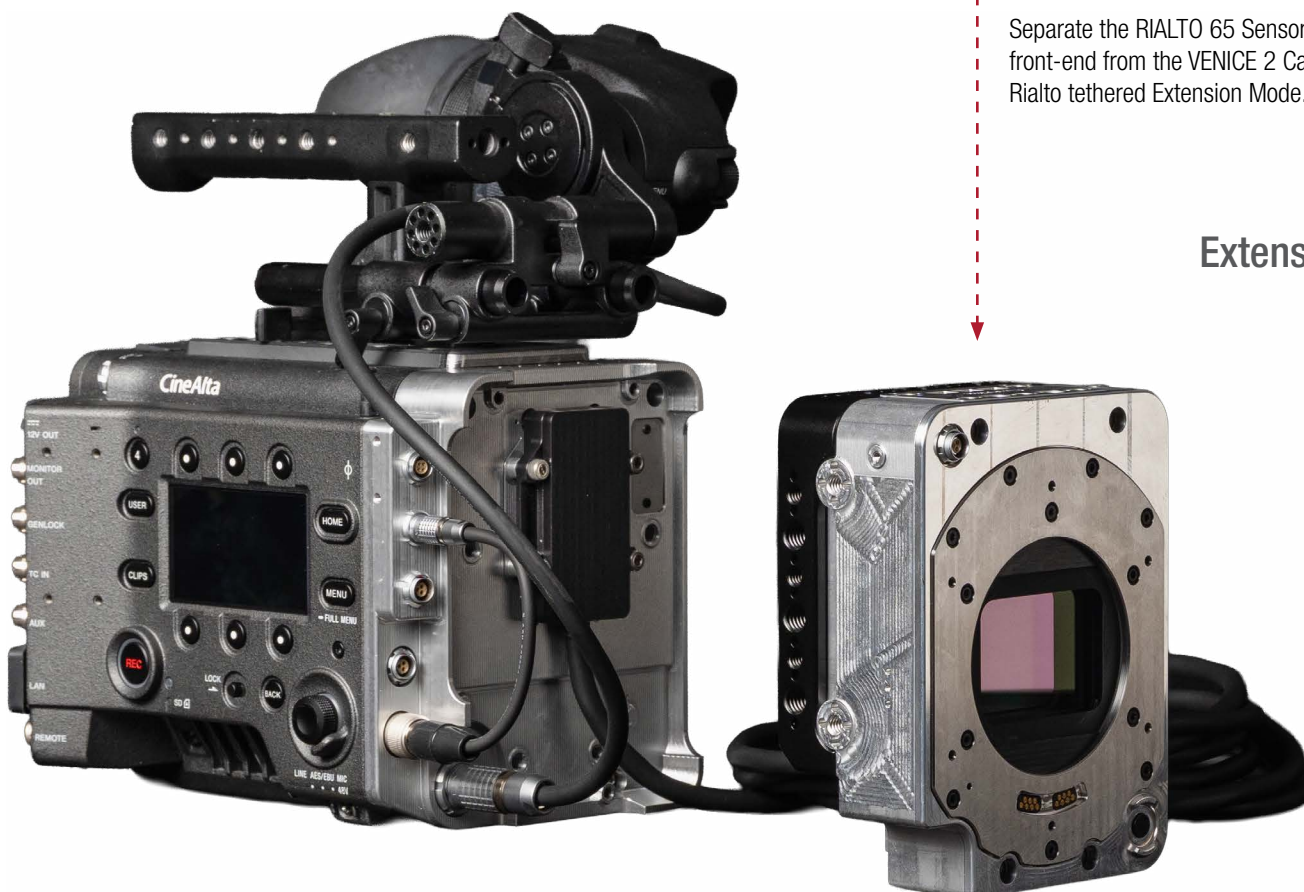
Sony RIALTO 65 Studio Mode and Extension Mode

RIALTO 65 has two operating modes:
Studio Mode
and Extension Mode.

RIALTO 65 can attach
directly to a VENICE 2
as a single-piece camera,
Studio Mode.



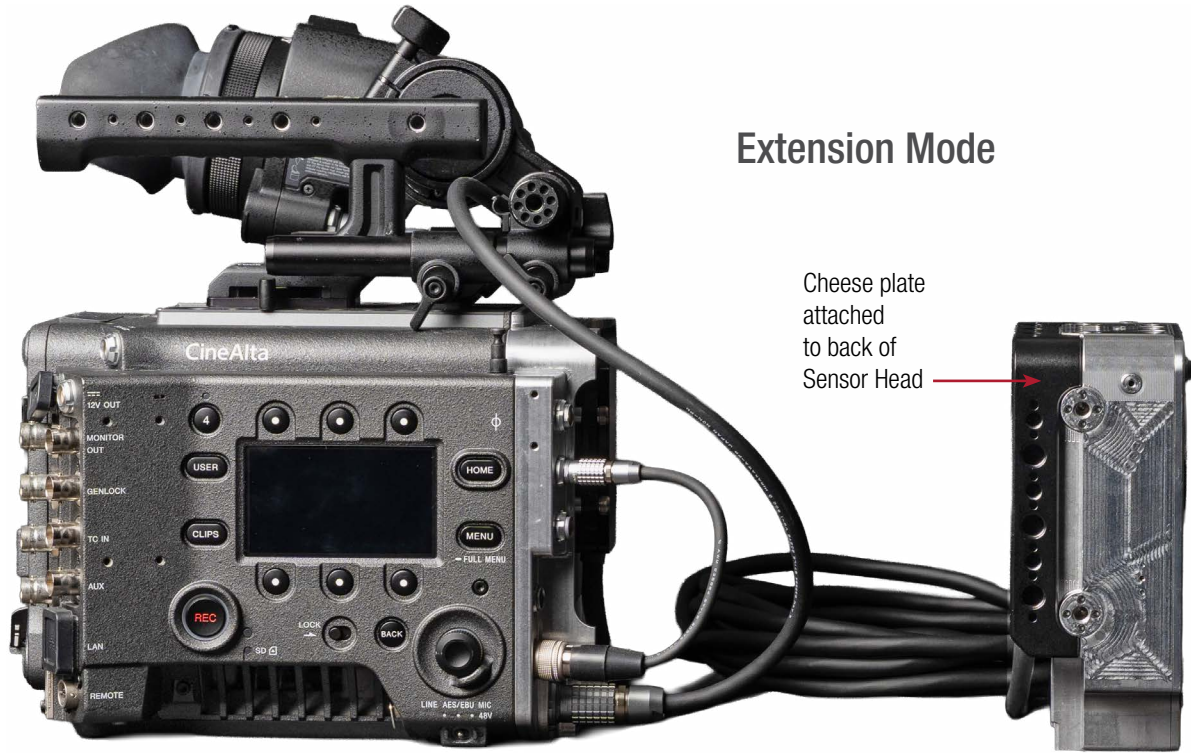
Studio Mode



Extension Mode

Sony RIALTO 65 Extension Mode

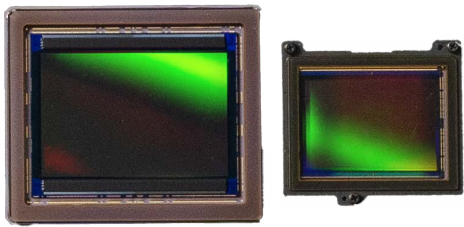
Extension Mode



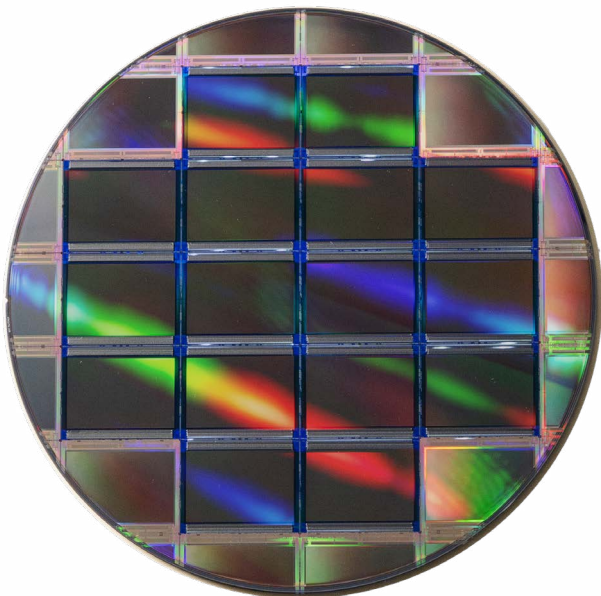
Sony RIALTO 65 Development Announcement



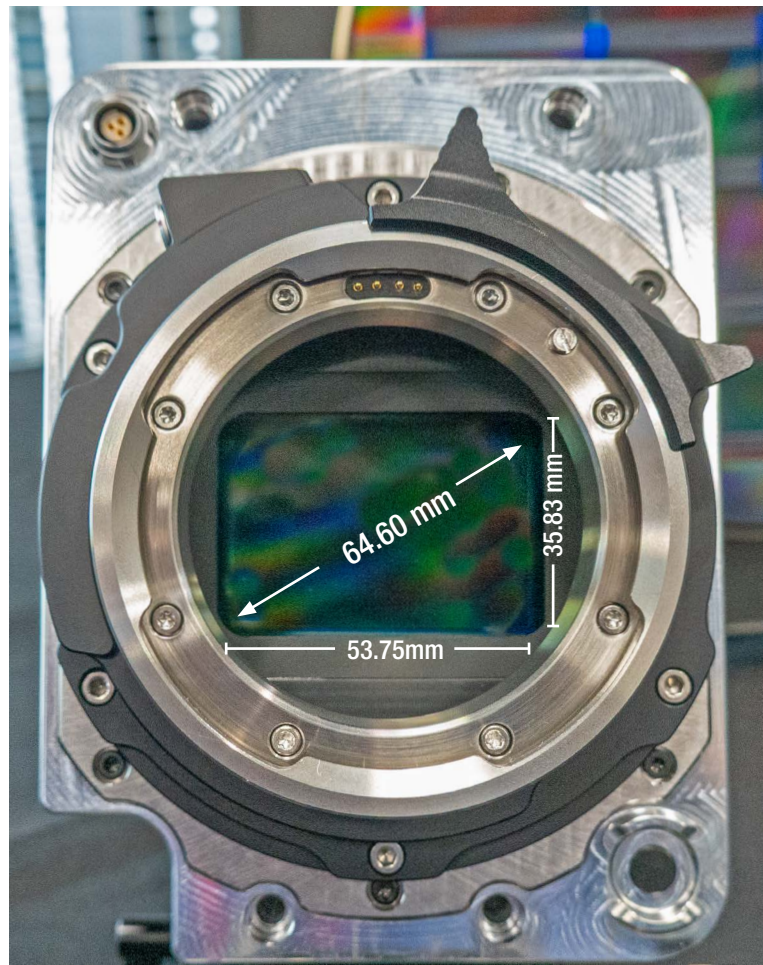
L-R: Kosuke Imagawa (Product Planning for VENICE and RIALTO), Tetsuji Yamaguchi (Project Leader), Koji Morioka (Lead Mechanical Engineer,) Takuro Ema (Head of Cinema Line Product Planning).



L-R: RIALTO 65 Sensor, VENICE 2 Sensor.



RIALTO 65 Image Sensor Wafer from Sony's fab.



Sensor dimensions and the new Gecko-Cam LPL Mount for RIALTO 65.

Sony RIALTO 65 Sensor Size and Various Formats

The 9.6K Sony RIALTO 65 sensor is 53.75 x 35.83 mm and has a ϕ 64.60 mm image diagonal. The full sensor aspect ratio is 1.5:1.

Sony RIALTO 65
9.6K 1.5:1
53.75 x 35.83 mm
64.60 mm ϕ

Sony RIALTO 65
9.6K 2.2:1
53.75 x 24.44 mm
59.04 mm ϕ

Sony RIALTO 65
9.6K 1.5:1
53.75 x 35.83 mm
64.60 mm ϕ

Sony RIALTO 65
9.6K 2.2:1
53.75 x 24.44 mm
59.04 mm ϕ

How did they come up with this sensor's dimensions?

The Sony team said that it is a dedicated, new design. I guess they decided to honor IMAX projection aspect ratios.

Of course, it is truly a multi-format, almost-infinite-aspect-ratio sensor and you can crop however you like.

As for IMAX, there are at least 1,760 IMAX theaters worldwide.

Of these, about 30 have IMAX 70mm or laser projection in 1.43:1 aspect ratio.

The remaining 1,730 screens have laser projection in 1.90:1 aspect ratio.

1.43:1 IMAX
The tall 35.83 mm sensor height of the RIALTO 65 benefits IMAX 1.43:1 production. It's just a slight edge crop to get from the RIALTO 65's native 1.5:1 aspect ratio to IMAX 1.43:1.

2.39:1

1.9:1 IMAX

These are preliminary diagrams and not official Sony drawings. They are subject to change. Any errors are mine.

SONY®

www.sonymovie.com



June 3, 2026 at the ASC Clubhouse. Sony RIALTO 65 Team after the RIALTO 65 Development Announcement.

Special Report by Jon Fauer, ASC

FILM AND DIGITAL TIMES

Copyright 2026 Film and Digital Times